



2024 AQUA LEADER ABOVE GROUND POOLS

*Summer Fun
Guaranteed!*



Hot Water
Leisure
Scapes

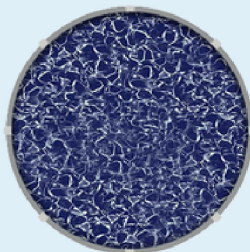




ATHENA LX • CANVAS

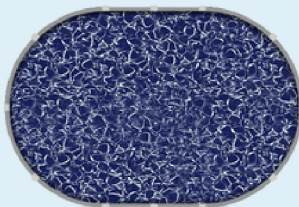
RESIN POOL FRAME

12' ROUND	\$2,350 ~ 12,800 L
15' ROUND	\$3,150 ~ 20,100 L
18' ROUND	\$3,620 ~ 28,900 L
21' ROUND	\$4,290 ~ 39,300 L
24' ROUND	\$4,760 ~ 51,000 L
27' ROUND	\$5,230 ~ 65,000 L
30' ROUND	\$5,700 ~ 80,000 L



Round
12' | 15' | 18' | 21'
24' | 27' | 30'

12' X 24' OVAL	\$5,400 ~ 25,000 L
13' X 20' OVAL	\$5,400 ~ 23,000 L
15' X 26' OVAL	\$5,400 ~ 34,000 L
15' X 30' OVAL	\$6,750 ~ 40,000 L
16' X 26' OVAL	\$6,650 ~ 37,000 L
18' X 33' OVAL	\$7,550 ~ 53,000 L
19' X 33' OVAL	\$5,400 ~ 56,000 L



Oval
12' x 24' | 13' x 20' | 15' x 26'
15' x 30' | 16' x 26' | 18' x 33'
19' x 33'

Kit Price includes: Pool Structure; Walls; Hardware; Liner;
Widemouth Skimmer/Return pack

Made in Canada 🍁 **Buttress Free**
Saltwater Friendly

No other above-ground pool company offers as many models, styles and options in above-ground resin pools as Aqua Leader. If you want the best in resin above-ground pools, look no further. Aqua Leader is the preeminent leader in unsurpassed experience, engineering and beauty at an affordable price.

Exclusive Buttress-Free Oval Support System

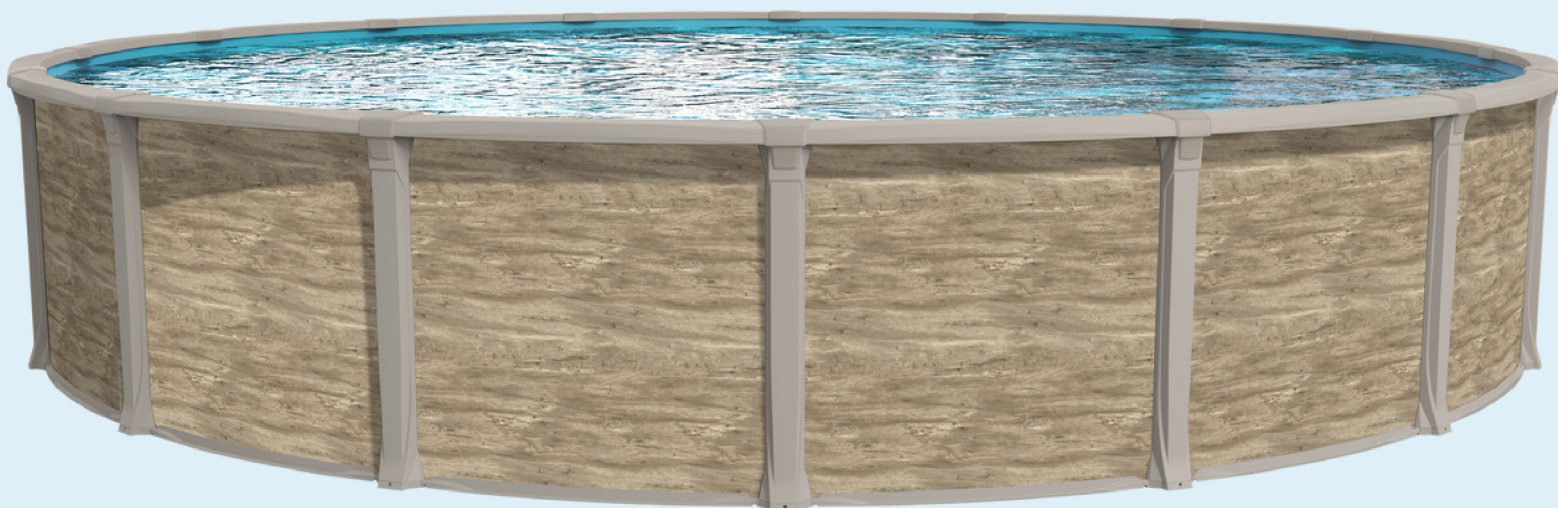
The Buttress-Free is an oval pool that does not require angle side supports (buttresses), which take up extra yard space. This unique system delivered unsurpassed structural strength without visible supports, has an attractive streamlined appearance and takes up less valuable yard space - a vigorous backhoe test is performed prior to the launch of each new Buttress-Free pool model to prove structural integrity. For example, a 15 x 30 ft oval pool with buttresses requires 21 x 30 ft once installed, whereas a 15 x 30 ft buttress-free oval will require less! You save on yard space, potentially allowing you enough room for a larger pool!

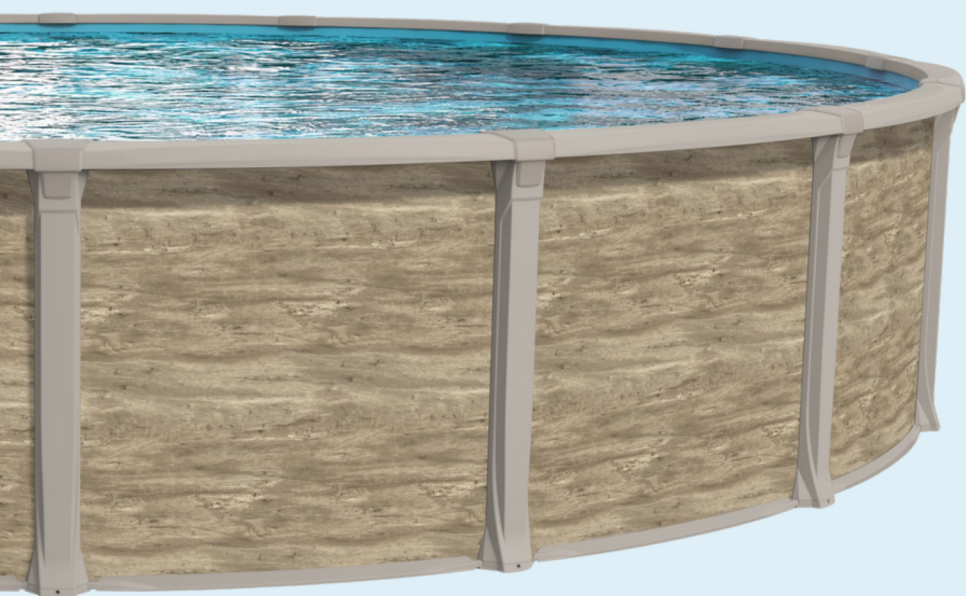
Warranty:

Pool Structure has 100% for the first 5-years; 50% discount for the balance of the life of the pool structure to original owner only.

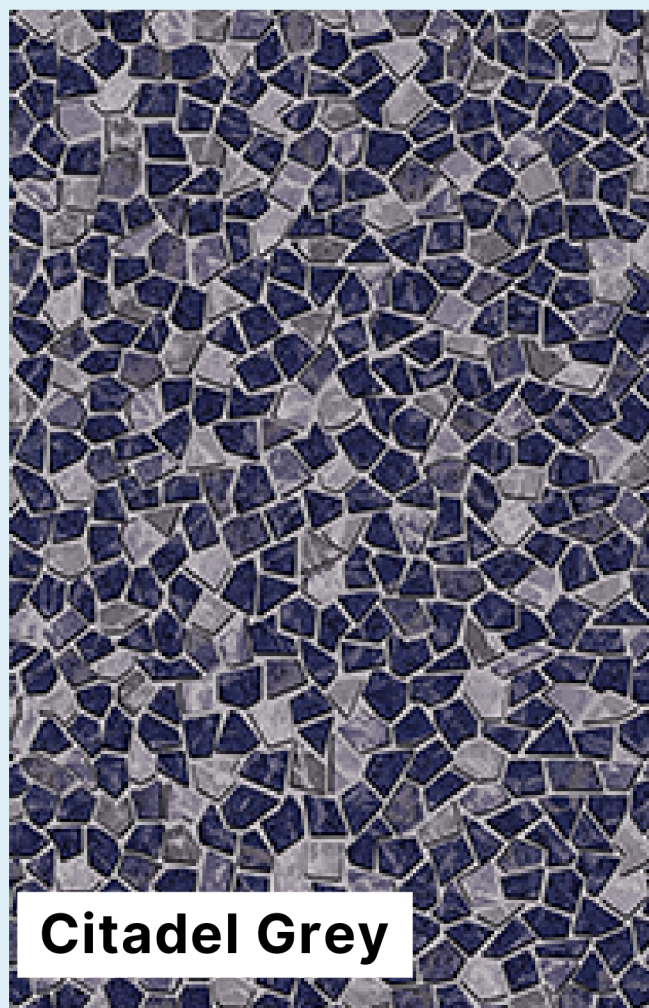
Specifications

Height	54"
Top Ledge	6" Resin - Champagne
Upright	Resin - Champagne
Bottom Rail	Resin - Champagne
Stabilizer	Resin
Bottom Plate	Resin
Top Plate	Resin
Ledge Cover	2 pieces - Champagne
Foot Cover	N/A
Oval System	Braceless - YM
Wall	Steel
Punch & Panel	Wide Mouth, No Panel





Liberte



Citadel Grey



Riverstone

***Not all liner patterns may be available at time of order.**

THE BASICS PACKAGE \$999.00

3/4hp Pool Pump 110V

16" Sand Filter System 135lb tank

Premium Silica Filter Sand 50lb Bags (qty.3)

**For up to 16,800 gallon pools*

Standard Maintenance Kit: telescopic pole, wall brush, thermometer, leaf net.

Standard Vacuum Equipment: vacuum hose, vacuum head.

Standard Plumbing & Fitting Pack

10' of 1.5" Flex Hose Pipe

Standard Pool Chemical Care Pak

Test Strips

Lab Analysis Water Testing & Profile



All your basics covered!

THE DELUXE PACKAGE \$1,999.00

1hp Pool Pump 110V

19" Sand Filter System 175lb tank

Premium Silica Filter Sand 50lb Bags (qty.4)

Platinum Maintenance Kit: telescopic pole, wall brush, thermometer, leaf net, leaf rake, filter backwash hose.

Standard Vacuum Equipment: vacuum hose, vacuum head.

Standard Plumbing & Fitting Pack

10' of 1.5" Flex Hose Pipe

Standard Pool Chemical Care Pak

Test Strips

Lab Analysis Water Testing & Profile

Pool Wall Coving (cove is ideal to keep the weight of the water in the pool liner from ballooning out under the pool wall. Eliminates the need for banking sand to create a sealed barrier between the wall & liner. Fights corrosion, doesn't erode or freeze, adds R-Value for insulation.)

Liner Guard (One-piece geotextile fabric construction with no cutting, taping, or measuring – just take out of the box and lay over the base. Porous – the unique fabric allows moisture to pass through. Cushioned feeling – the density of the fabric will not completely compress, giving a softer pool bottom. The strong geotextile fabric composition prevents rock, roots, sand, etc. from penetrating and damaging the liner. Reduces staining of the vinyl. Mold and mildew resistant. Smoother use of pool cleaners.)



Everything your pool needs!

AVAILABLE UPGRADES, BY QUOTE

AFM® ng Filter Media: Filters down to 1 micron for the cleanest & clearest water. Guaranteed for Life!

Backwashing results in appx. 60% less water used

(green/brown glass replaces sand, uses a fraction of required media; fully resistant to bacterial growth, superior filtration, hydrophobic surface, environmentally sustainable).

Cartridge Filter System & Pump

Wall Protective Foam 52" High - \$2.29 per Foot



PENTAIR

HEATING

Extend your season with an energy efficient natural gas or propane pool heater.

- Pentair 125k BTU \$2,109
- Hayward H150 150k BTU \$2,799
- Hayward H200 200k BTU \$3,299
- Hayward H250 250k BTU \$3,449
- Pentair 175k BTU \$3,299
- Pentair 200k BTU \$3,499
- Pentair 250k BTU \$3,939
- Pentair 300k BTU \$3,999
- Pentair 400k BTU \$5,049



HAYWARD

Propane Version of the above heaters is by Special Order only.

Heat Pumps and Electric Heaters - By Quote.

If heater is in enclosed space, Vent Kit is required & in addition.

While supplies last. Pricing subject to change with no notice.

STEPS, LIGHTING & COVERS

A-FRAME LADDER \$379.00

The Ocean Blue A-Frame Ladder is a reliable entry system. Designed to be filled and weighed down with water, the A-Frame ladder requires no additional weights. The Ocean Blue A-Frame has a 300lb capacity and easily adjusts to fit above-ground pools up to 54" high.



LADDER CONVERSION KIT \$150.00

Converts the Ocean Blue A-Frame Ladder to a pool floor-to-deck style.

VINYL WORKS CANADA

Variety of Safety Ladders & Fencing available that meet & exceed local bylaw requirements, giving you peace of mind. **By quote.**



FESTIVA POOL STAIRS \$749.00

4-tier durable, roto-molded step entry system is easy to install and adapts easily to pool bottom level variations on pools 48" to 54" high. Weight capacity 400 lbs.



SOLAR COVER

Slow water evaporation, protect from UV and debris such as leaves with the Toile Soleil Covers. Blue, extruded 6mil covers are made from 100% new material and packed in a reusable poly bag for storage.

By quote.



WINTER COVER & PLUGS KIT

Protect your pool over the winter from excess debris with a winter cover that includes a coated cable & winch. Skimmer and return plugs protect your lines and provide the ultimate freeze protection.

By quote.

SOLAR COVER REMOVAL SYSTEM

Variety of styles, depends on access around the pool.

By quote.



POOL LIGHT \$349.00

Aqualuminator fits easily into most return jet fittings. Brilliant white halogen light includes 2 color lenses & 25' cord.



Light up the night!

CLEANING & SANITATION

ROBOTIC CLEANER DOLPHIN

T15 \$949.00

Just plug in, drop into the pool, and let the Dolphin work its magic. Superior floor scrubbing capability, lightweight, CleverClean™ Smart Navigation and has an easy to access top load filter.



SALT WATER SYSTEM \$1,699.00

The Hayward Salt System is a reliable unit for consistent chlorine production and allow you to enjoy the feel and benefits of salt water. Includes system, Sacrificial Anode & PVC reducers. Salt is in addition.



SALT BAG \$27.99 EA

Premium 99.9% purity pool salt. Quantity required depends on the pool size.

Less time cleaning - more fun in the sun!

AUTOMATIC CHLORINATOR FEEDER \$169.99

In-line chemical feeder allows for easy, controlled output of large or small chlorine tablets to your pool water.




Summer Fun Guaranteed!

Since 2003, our family-owned and operated company has been dedicated to enriching the backyard experiences of families across Alberta. We take pride in transforming your outdoor space into a serene oasis just steps from your backdoor.

Backed by over 21 years of unwavering commitment to customer satisfaction and deep expertise in the leisure industry, we're passionate about helping you create a backyard retreat filled with joy, relaxation, and rejuvenation.

When you invest in one of our above-ground pools, you can trust that you're getting a product of exceptional quality and craftsmanship. With two convenient locations to serve you, an in-house Service Department, and a team of knowledgeable professionals, we're here to support you every step of the way.

Rest assured that your pool and equipment are backed by manufacturer warranties, and we're more than happy to assist you with any warranty-related inquiries or claims.

 403-912-2045

 sales@hotwaterpoolsandspas.ca  hotwaterpoolsandspas.ca



Hot Water
Leisure
Scapes



Taxes, Destination, and Delivery Fees are in addition.

The dimensions, weights, illustrations, photos, and other specifications are approximate and are for illustrative purposes only.

The company reserves the right to modify and/or discontinue without notification any feature, in any pool model. Any piece of equipment or accessory, and pricing is subject to change with no notice.

Version 2024-1.